

FSP Group Structure



FSP Group



SPI
Electronic Co., Ltd.



FORTRON/SOURCE



Fortron/Source is a:

- Privately held “C” corporation
- Member of the FSP Group of companies
- Leader in power conversion product manufacturing
- Full turn-key services from design through manufacturing and shipment
- Certified ISO 9001: 2000 company -TUV Rheinland of North America





U. S. A. Based Company



Over 1,000,000 square feet of available manufacturing capacity



Specializing in “power conversion”
Electronic Manufacturing Services (EMS) assemblies

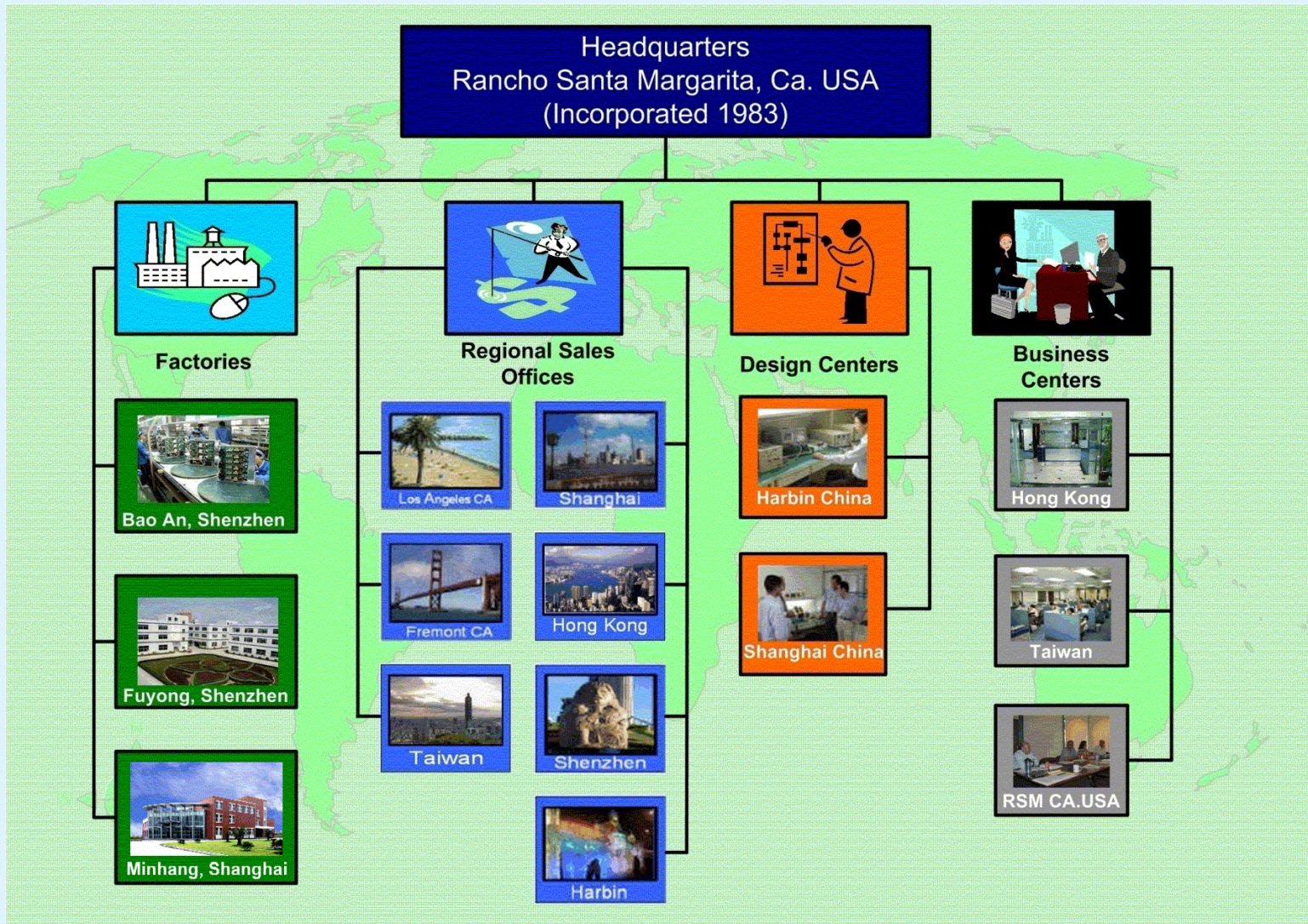


Capabilities Include:

- High volume programs including SMT, through-hole, automatic testing, and burn-in
- High power, medium volume, complex products
- Contract design and product transfer
- Strategic sales service
- Logistical support



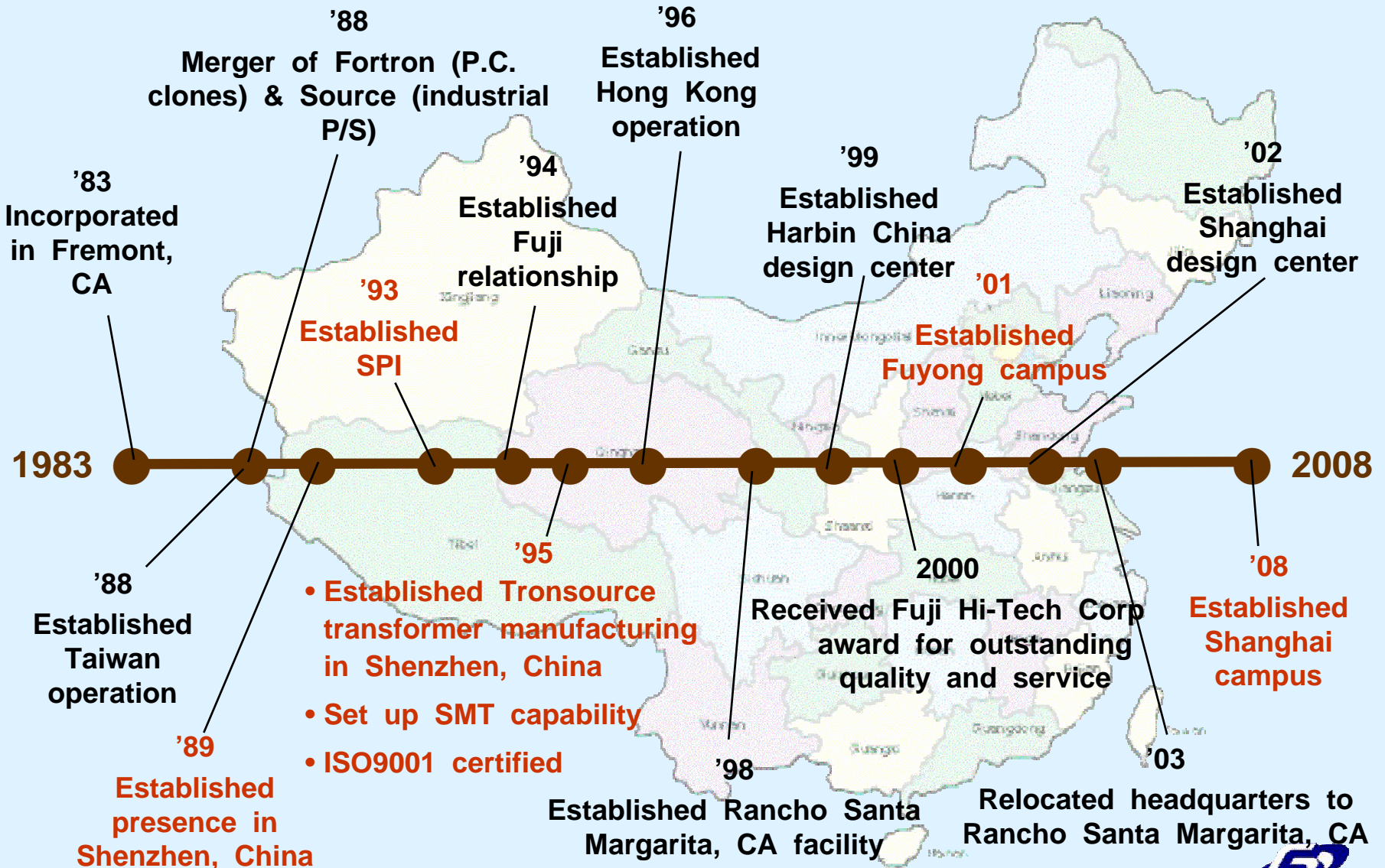
World Wide Locations



World Wide Locations



Timeline



Fortron/Source Corporation Mission Statement



Fortron/Source provides its customers:

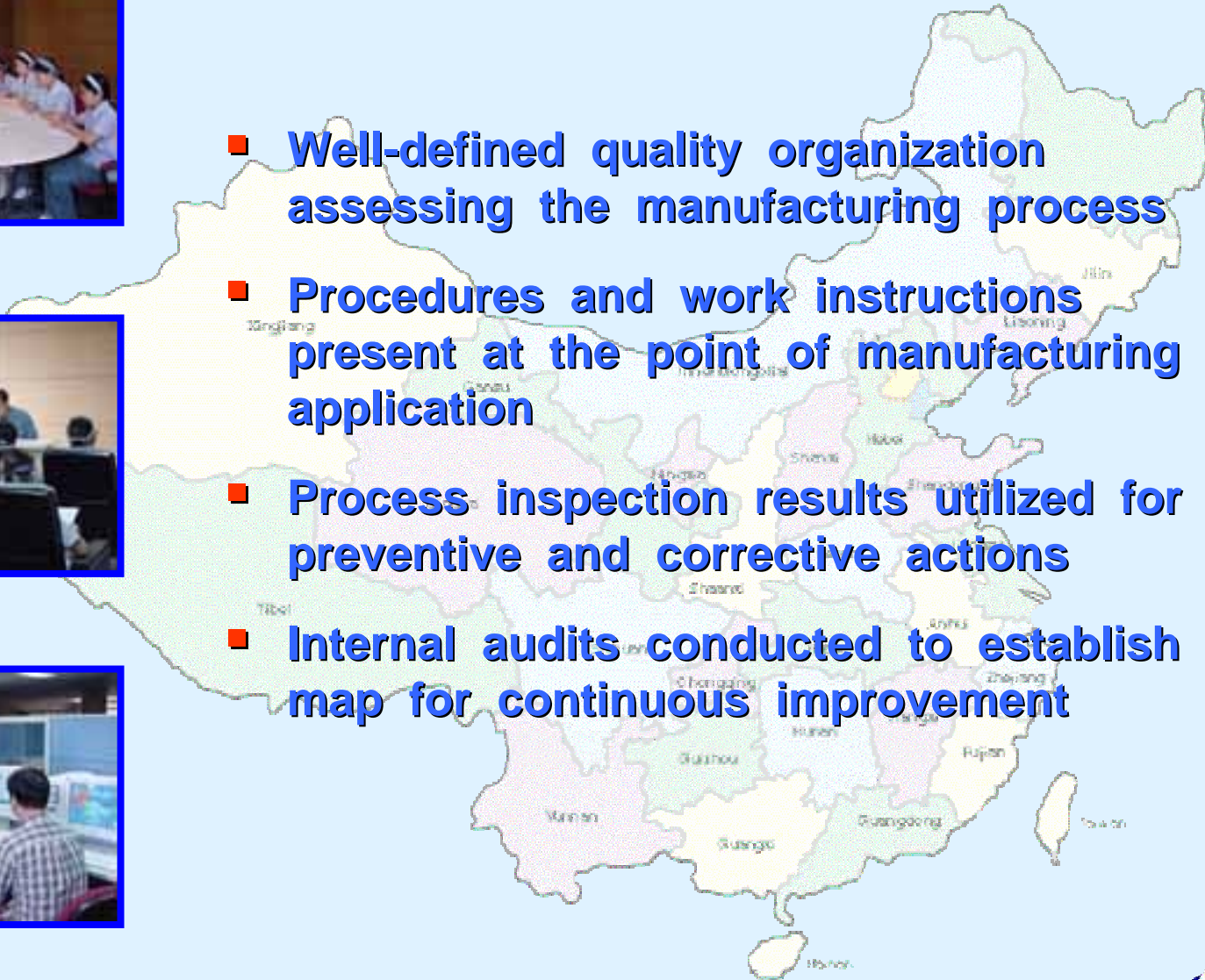
- **The highest quality levels**
- **A wide range of OEM services**
- **Significant value added solutions**
- **Efficient program management**



Quality



- Well-defined quality organization assessing the manufacturing process
- Procedures and work instructions present at the point of manufacturing application
- Process inspection results utilized for preventive and corrective actions
- Internal audits conducted to establish map for continuous improvement



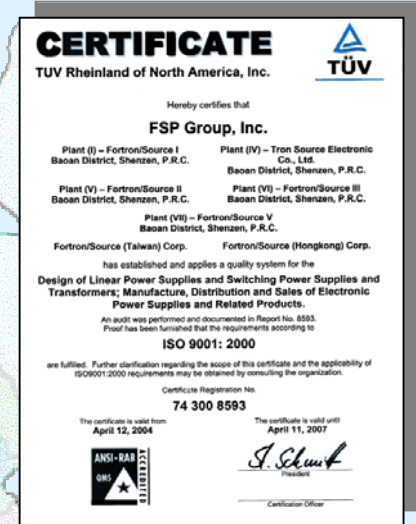
Fortron/Source Quality Policy



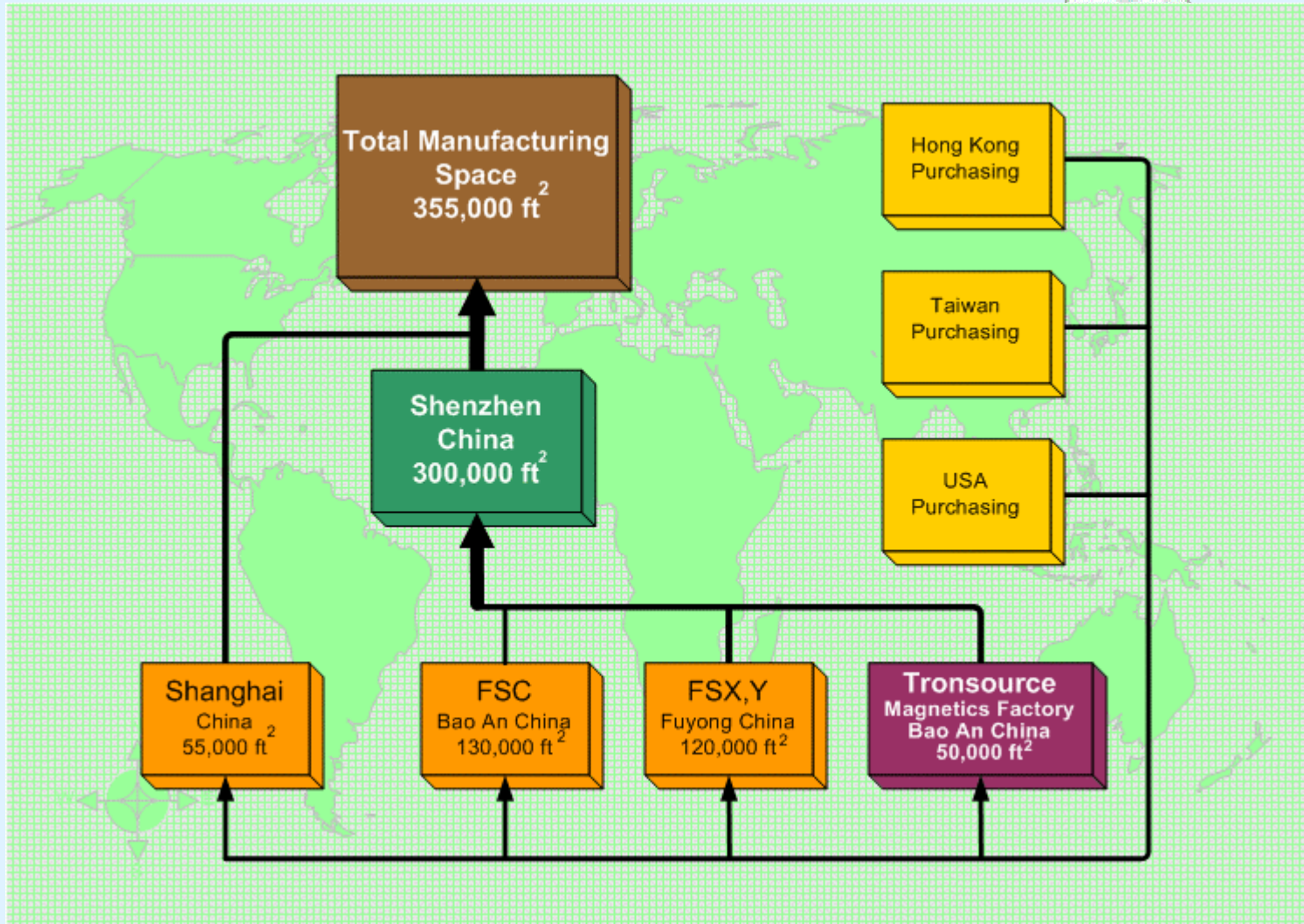
In accordance with our ISO 9001:2000 certification, we will:



- Exceed our customers' expectations
- Pursue continuous process improvement
- Strive for zero defects
- Accept leadership in quality matters as a guiding principle for the company



Manufacturing and Support Facilities

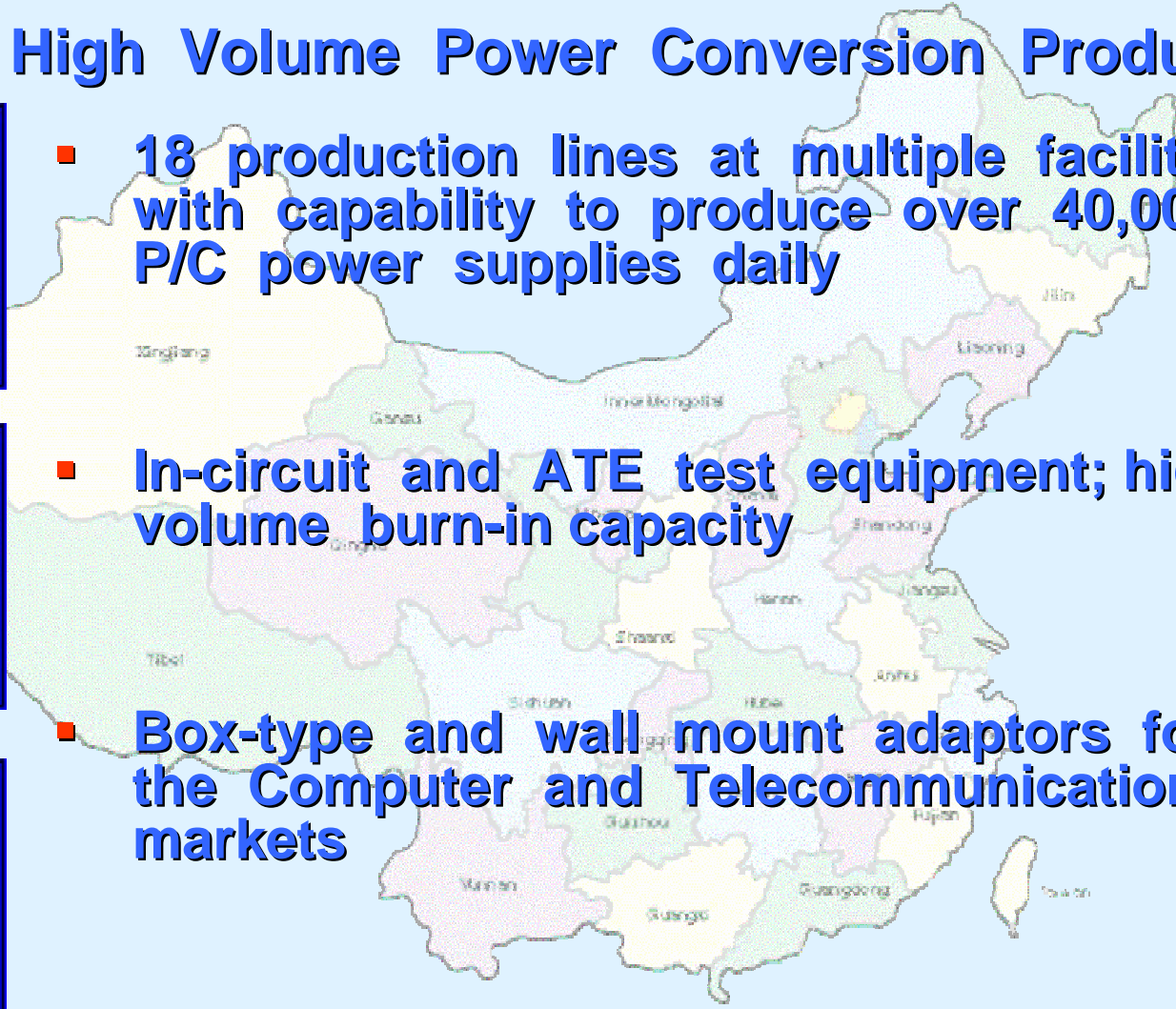


Manufacturing Capabilities

High Volume Power Conversion Products



- 18 production lines at multiple facilities with capability to produce over 40,000 P/C power supplies daily
- In-circuit and ATE test equipment; high volume burn-in capacity
- Box-type and wall mount adaptors for the Computer and Telecommunications markets
- Reject rate at <300 PPM



Manufacturing Capabilities

Power Conversion Assemblies



- **Linear, switching and din rail power supplies**
- **Single and multiple outputs – from 15w to 15Kw**
- **OEM markets serving Medical, Industrial, Computer, and Telecommunications markets**
- **Technical support groups**
- **OEM power supply specialists**

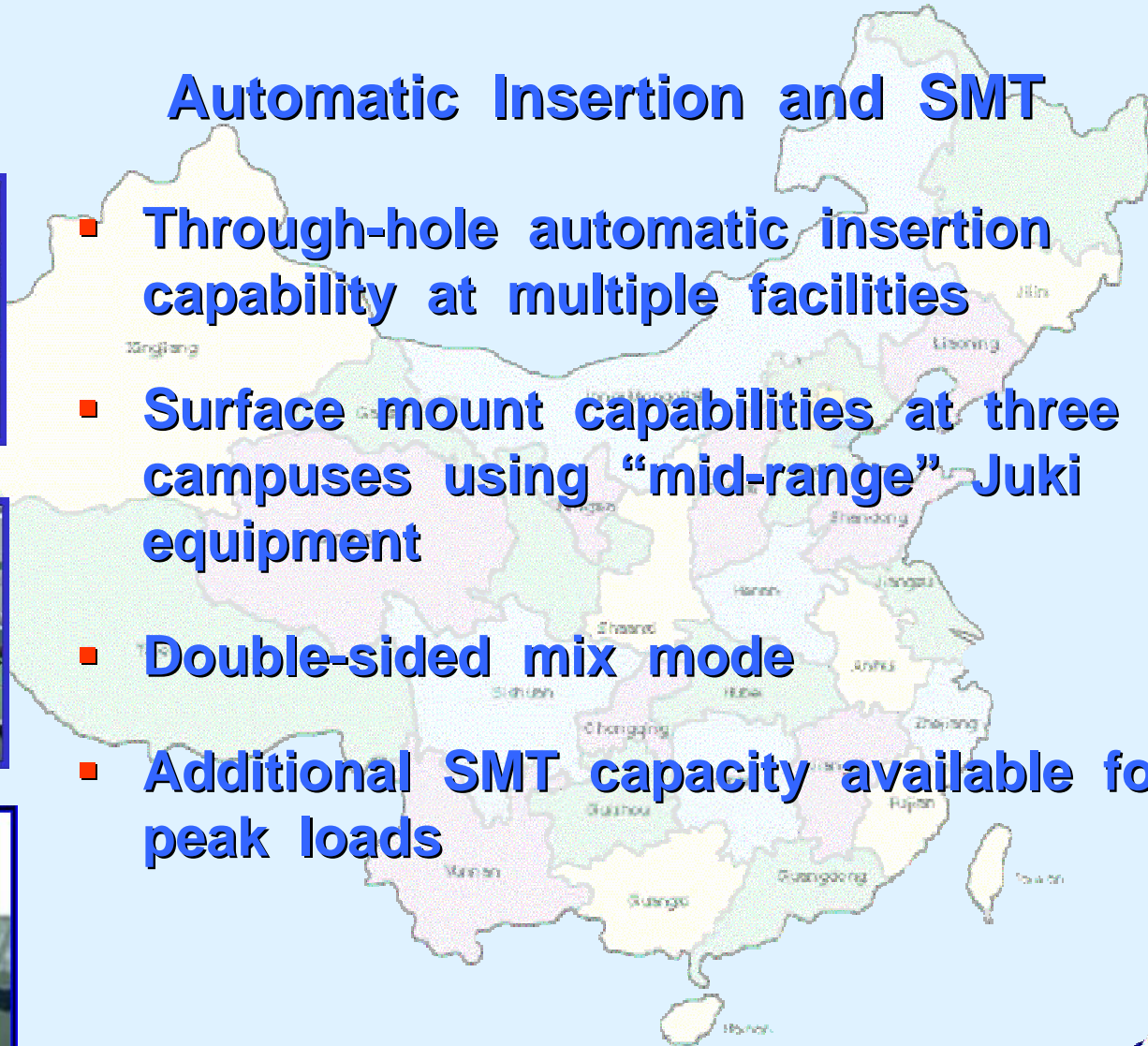


Manufacturing Capabilities

Automatic Insertion and SMT



- **Through-hole automatic insertion capability at multiple facilities**
- **Surface mount capabilities at three campuses using “mid-range” Juki equipment**
- **Double-sided mix mode**
- **Additional SMT capacity available for peak loads**





World class facilities



Campus environment with multiple facilities

Shenzhen Factory Fuyong China



Capabilities include high power, complex assemblies



Quality always first priority





**Long established
and stable
environment**





Shenzhen Factory Boa An China



**Highly motivated,
flexible workforce**



Factory Statistics

Factory	FSC	FSX, FSY
<p>Location</p>	<p>Bao An China</p>	<p>Fuyong China</p>
<p>ISO9001: 2000</p> <div data-bbox="335 715 496 1011" style="border: 1px solid black; padding: 5px; text-align: center;">  <p>Certified to ISO 9001:2000</p>  <p>TUV TUV Rheinland of North America</p> </div> <p>World wide agency approvals</p>	<ul style="list-style-type: none"> ▪ 130,000 sq. ft. ▪ 1000+ employees ▪ Din rail P/S ▪ Linear & switching P/S ▪ Adapters, P/C P/S, UPS ▪ Industrial P/S ▪ Lines: 12 ▪ AI, ICT, ATE ▪ 350,000 units / month 	<ul style="list-style-type: none"> ▪ 120,000 sq. ft. ▪ 500+ employees ▪ High power and mid-range switching P/S ▪ DC / DC up to 300 Watts ▪ Lines: 9 ▪ SMT, AI, ICT, ATE ▪ 45,000 units / month



Factory Statistics

Factory	Tronsource	Shanghai
Location	Bao An China	Minhang District
<p>ISO9001: 2000</p> <p>World wide agency approvals including China CCC</p>	<ul style="list-style-type: none"> ▪ 50,000 sq. ft. ▪ 700+ employees ▪ UPS, Transformers ▪ Work cells ▪ Automated processes ▪ 7,000,000 units / month 	<ul style="list-style-type: none"> ▪ Manufacturing: 43,000 sq ft. ▪ Engineering & Admin: 14,000 sq ft ▪ Employee dormitory: 26,600 sq ft



Support Staff and Program Management



- Customer account management specialists located in Asia and the U.S.A.



- Global purchasing presence



- Business planning and material planning through “open-system” software (ACCPAC, Platinum, & Misys)



Understanding The Culture

Fortron/Source has taken the time to:

- **Build sound relationships as your Chinese partner**
- **Establish an effective organization structure**
- **Provide strong process control and desired quality levels**
- **Develop a strong engineering capability**
- **Understand the logistics and the importance of establishing “relationships”**



Supply chain management

Fortron/Source provides expertise in:

- **Logistical services and transportation infrastructure**
- **Customs procedures and customs clearing time**
- **Cargo tracking services and international communication**
- **Supplier reliability**



Logistical Support Capabilities

Fortron/Source provides expertise in:

- **Warehousing**
- **Independent AQL audit**
- **Direct drop shipment to end-user**
- **Foreign currency exchange handling**
- **Managing regional custom and brokerage exchanges**



Fortron/Source Design Capabilities

Fortron/Source resources:

- Design centers located in Harbin and Shanghai, China
- AutoCAD mechanical design and Protel board layout networked on servers
- Fully equipped labs capable of providing data support design verification and specification adherence
- Harbin: 29 people make up design staff including 16 EE
- Shanghai: (21 design and support staff)



Fortron/Source Design Capabilities

Private label & customer driven programs

- **AC / DC: 10 Watt – 15,000 Watts**

- High volume
- Automotive
- Industrial
- Networking

- **DC / DC: 10 Watts – 300 Watts**

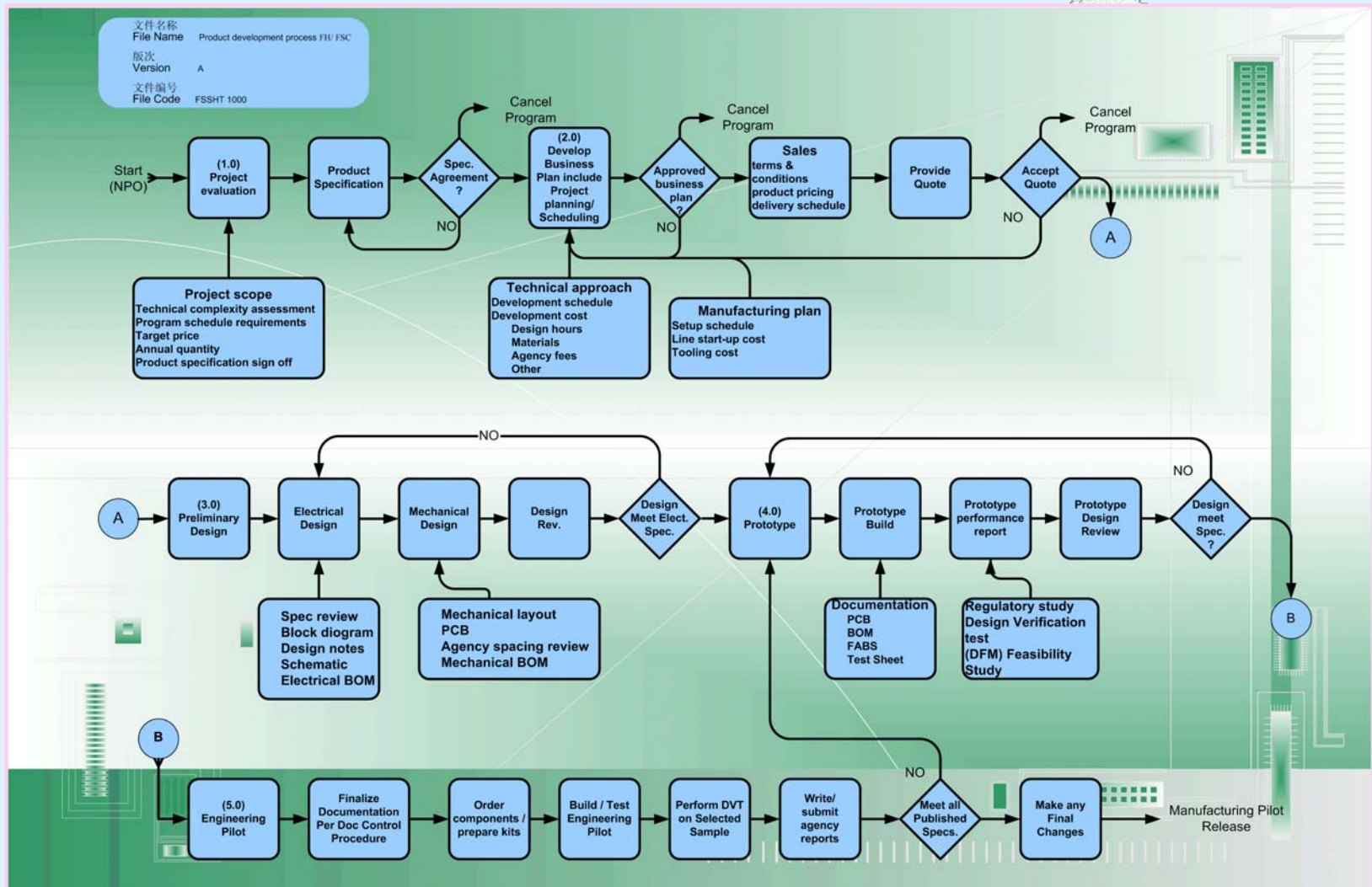
- Network and computer applications

- **Product design support**

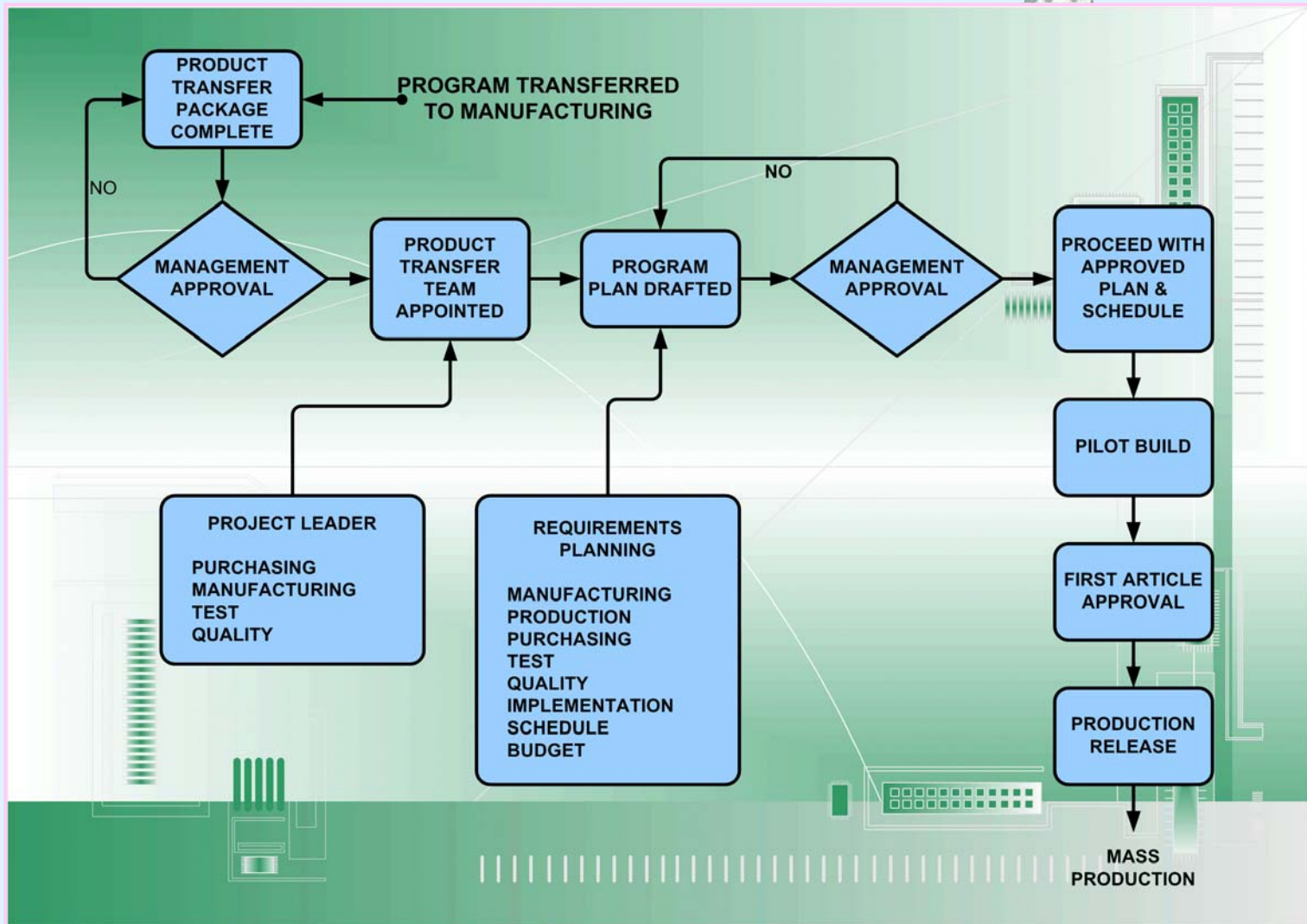
- Drafting, PCB layout, mechanical
- Sourcing
- Product transfer



Product Development Process



Product Transfer Process





Existing Programs and Products



Fortron/Source Product Capability

High power AC/DC power supplies

**Customer designed, high density,
hot-swap and redundant.**

**Single and multiple outputs from
400W to 15,000W for Telecom and
Datacom applications**

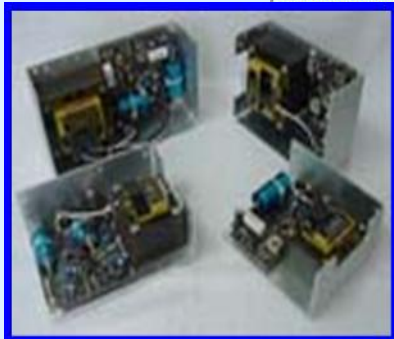


Fortron/Source Product Capability



- **Transformers**

Linear transformers include industrial and buck-boost single and three phase construction; switch-mode products include torroids and bobbin-mount inductors and transformers



- **Linear power supplies**

Broad range of single, dual, and triple outputs from 5 volts to 48 volts. Industry standard packaging and full agency approvals



Fortron/Source Product Capability



- **PC power supplies**

A world leader in design and manufacturing. Over sixty models with outputs ranging from 100W to 700W. Some models with power factor correction



- **DC/DC converters**

Board mount, Half-brick and full-brick low profile converters from 10W to 300W. High efficiency 150W half-brick with 24V and 48V inputs and outputs from 1.5V to 28V



Fortron/Source Product Capability



- **Adaptors and inverters**

30W to 150W in single, dual, and triple outputs. Features include universal input, compact size, and light weight construction. Meets CISPR 22, FCC class B and all agency requirements.



- **Din rail power supplies**

Complete line of single and three phase power supplies. Ranges from 15 to 480 Watts. UPS backup support available. Industrial packaging certified to UL and TUV.



Fortron/Source Product Capability

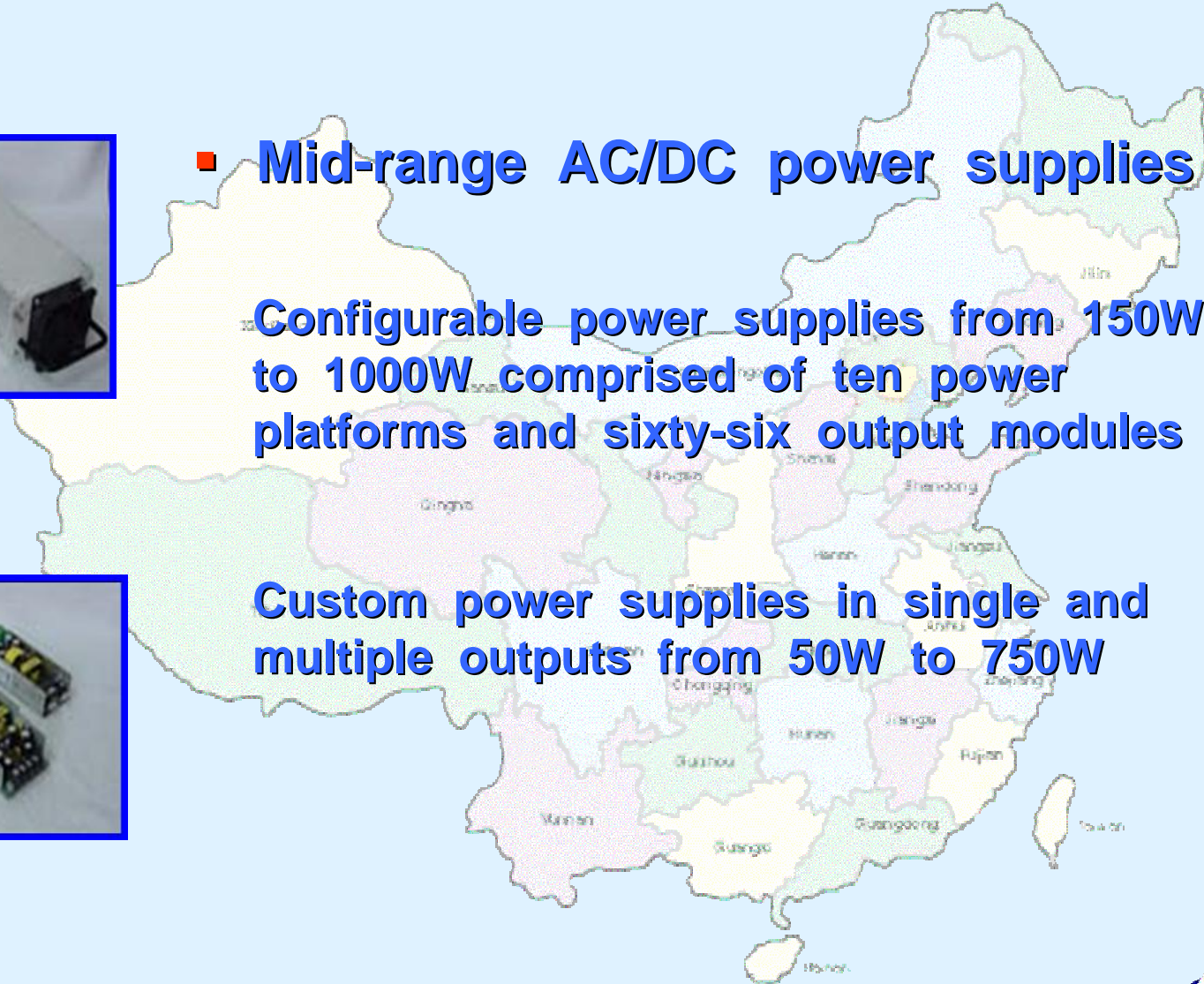


- **Mid-range AC/DC power supplies**

Configurable power supplies from 150W to 1000W comprised of ten power platforms and sixty-six output modules



Custom power supplies in single and multiple outputs from 50W to 750W



Thank You

We appreciate the opportunity to be considered in your business plan.

Thank you for investing your time to learn about Fortron/Source and our capabilities.

We will do everything possible to develop a meaningful relationship that will profit both companies

For additional information, visit our web site at:

www.fortronsource.com

